

M D E S I G N S

M A S T E R S I N I N T E R I O R S

CSIE Awards 2025 Entry | Category: Concept of the Year | Century Star Restaurant

TWO IDENTITIES

Yangtze



Danube



RESTAURANT

The Danube springs from **Germany's Black Forest**, a realm of legends and castles. Here, feudal history meets precision engineering and a vibrant beer culture: tradition in step with bold innovation.

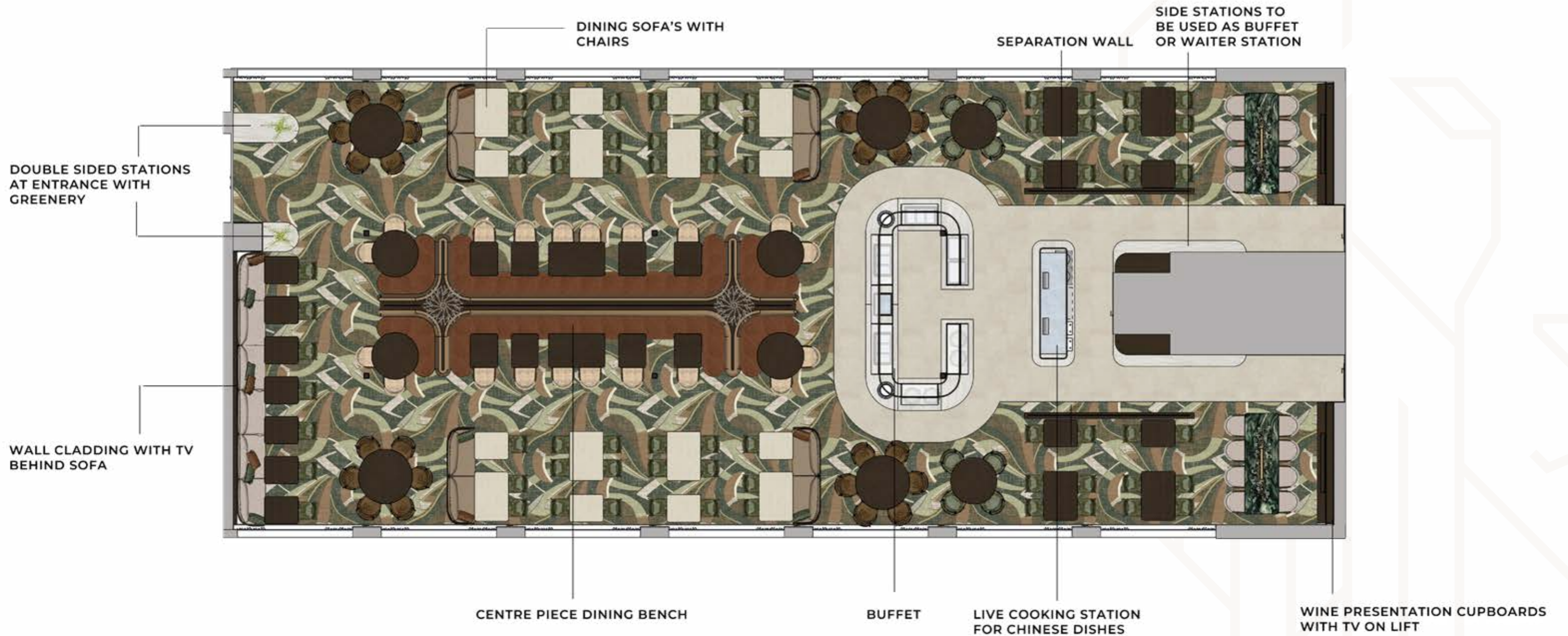
We draw from warm woods found in historic façades and wall claddings, elements shared by German and Chinese design. They bring depth, texture, and a cosy warmth to a contemporary room.

Beer-gold glass mirrors river flow and transparency, honouring German breweries while, in Chinese culture, evoking water's fertility and the Earth element—abundance, energy, and renewal. The result is an immersive, sustainable dining haven that unites cultures and elevates every meal.

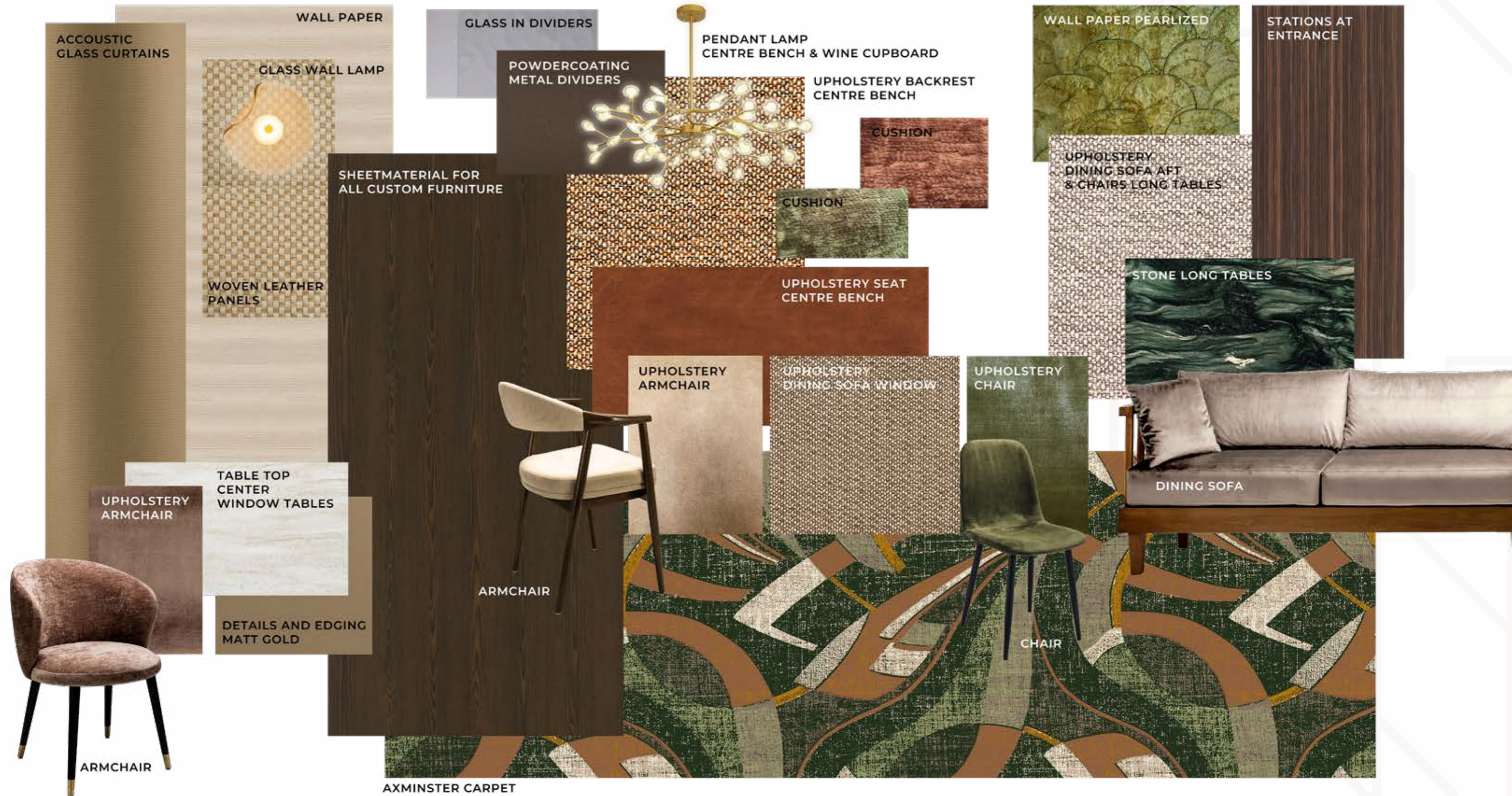


FOREST LIFE - GOLDEN BEER - CHARMING BEAMS

FLOOR PLAN



COLORS & MATERIALS



ARTWORK

We crafted the artworks and carpet in-house to capture Century Star Restaurant's cultural fusion. **AI-guided compositions blend German and Chinese traditions** into a narrative that mirrors the rivers' unifying spirit.

Inspired by Chinese ink landscapes and German Romanticism, the pieces fuse mountains, flowing waters, and pavilions with beer-gold accents and architectural poise. Subtle embroidery textures add tactile richness, inviting closer exploration.

Featured animals—pheasant and serpent—draw from shared folklore to symbolise vitality and wisdom. Chinese vistas weave through Art Deco linework, sparking an East-West dialogue that goes beyond decoration. These pieces anchor storytelling, turning meals into journeys of harmony, heritage, and the rivers' life force.



FRONT PORT SIDE



FRONT STAR BOARD



AFT ABOVE LONG BENCH



The **custom Axminster carpet** echoes this vision: fluid river lines in forest shades with Art Deco geometry. It grounds the room in organic flow and unity, supports circulation, and reflects our sustainable, trend-aware maritime ethos. Art Deco links Germany's industrial heritage with China's present-day prosperity, bridging past and future in a single graphic language.